

\$678,000 - 8 Chelsea Cape, Chestermere

MLS® #A2217790

\$678,000

4 Bedroom, 4.00 Bathroom, 1,887 sqft

Residential on 0.08 Acres

Chelsea_CH, Chestermere, Alberta

Welcome to your dream home in the highly sought-after community of Chelsea in Chestermere! This immaculate and beautifully upgraded 2-storey home, built in 2021, offers the perfect blend of modern luxury, thoughtful design, and move-in-ready convenience.

Boasting 4 spacious bedrooms, 3.5 bathrooms, this home is perfect for growing families or those who love to entertain.

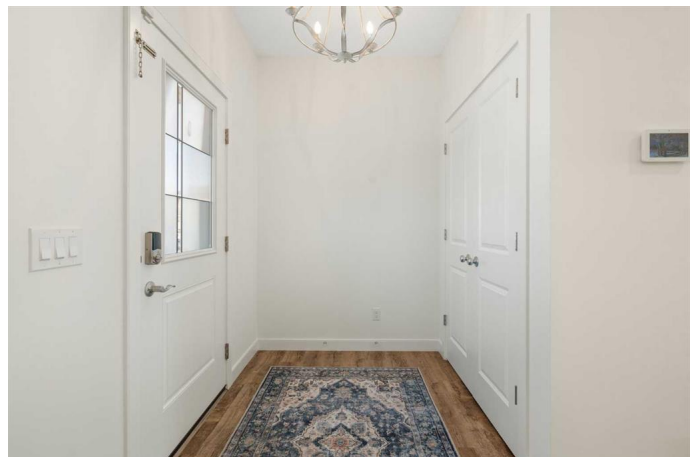
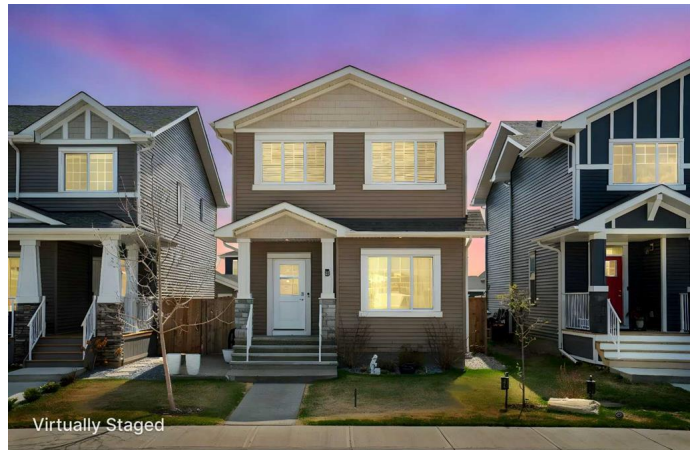
EXTERIOR & CURB APPEAL:

Situated on a beautifully landscaped lot with lush green grass, exposed concrete, and a stunning gazebo in the backyard, ideal for summer entertaining or relaxing evenings. The double detached HEATED garage with a keypad entry and upgraded finishes offers comfort and security year-round. Also enjoy a gas line for BBQs

Step inside to 9-foot ceilings, beautiful LVP flooring, and a bright, open layout. Enjoy a spacious flex room, perfect for a home office or playroom, and a cozy gas fireplace that anchors the living area. The chef-inspired kitchen features stainless steel appliances, a walk-in pantry, modern cabinetry. Pot lights outside and sleek finishes throughout create a warm and modern vibe.

SECOND FLOOR COMFORTS:

Upstairs, you'll find a large primary retreat complete with a walk-in closet and a private ensuite. Two more generously sized bedrooms and a full bath make this the perfect setup for



families. Upgraded carpets and a thoughtful layout provide both comfort and functionality.

FINISHED BASEMENT:

The developed basement offers even more space with a fourth bedroom, full bathroom, and a cozy electric fireplace, perfect for a media room, guest suite, or entertainment.

ADDITIONAL FEATURES YOU’LL LOVE:

- Central Air Conditioning
- Wireless HVAC control
- Gas & electric fireplaces
- 9’ ceilings
- Pot lights and stylish lighting
- BBQ gas line
- Heated garage with keypad entry

Located in a vibrant, fast-growing community with nearby schools, parks, shopping, and quick access to Calgary, this home has everything you’re looking for and more!

This is the one you've been waiting for. Schedule your private showing today and experience what elevated living in Chelsea looks like!

Built in 2021

Essential Information

MLS® #	A2217790
Price	\$678,000
Bedrooms	4
Bathrooms	4.00
Full Baths	3
Half Baths	1
Square Footage	1,887
Acres	0.08
Year Built	2021
Type	Residential

Sub-Type	Detached
Style	2 Storey
Status	Active

Community Information

Address	8 Chelsea Cape
Subdivision	Chelsea_CH
City	Chestermere
County	Chestermere
Province	Alberta
Postal Code	T1X 1Z4

Amenities

Parking Spaces	2
Parking	Alley Access, Double Garage Detached, Garage Door Opener, Garage Faces Rear, Heated Garage, Off Street, On Street
# of Garages	2

Interior

Interior Features	Closet Organizers, Double Vanity, No Animal Home, No Smoking Home, Open Floorplan, Pantry, Quartz Counters, Recessed Lighting, Separate Entrance, Storage, Vinyl Windows, Walk-In Closet(s)
Appliances	Central Air Conditioner, Dishwasher, Dryer, Electric Range, Garage Control(s), Microwave, Refrigerator, Washer
Heating	High Efficiency
Cooling	Central Air
Fireplace	Yes
# of Fireplaces	2
Fireplaces	Electric
Has Basement	Yes
Basement	Finished, Full

Exterior

Exterior Features	BBQ gas line, Lighting, Other, Storage
Lot Description	Back Lane, Few Trees, Gazebo, Landscaped, Low Maintenance Landscape, Other, Private
Roof	Asphalt Shingle
Construction	Vinyl Siding, Wood Frame
Foundation	Poured Concrete

Additional Information

Date Listed	May 5th, 2025
Days on Market	6
Zoning	R-1PRL

Listing Details

Listing Office	First Place Realty
----------------	--------------------

Data is supplied by Pillar 9â„¢ MLS® System. Pillar 9â„¢ is the owner of the copyright in its MLS® System. Data is deemed reliable but is not guaranteed accurate by Pillar 9â„¢. The trademarks MLS®, Multiple Listing Service® and the associated logos are owned by The Canadian Real Estate Association (CREA) and identify the quality of services provided by real estate professionals who are members of CREA. Used under license.