

# \$3,795,000 - 530 Crescent Road Nw, Calgary

MLS® #A2228986

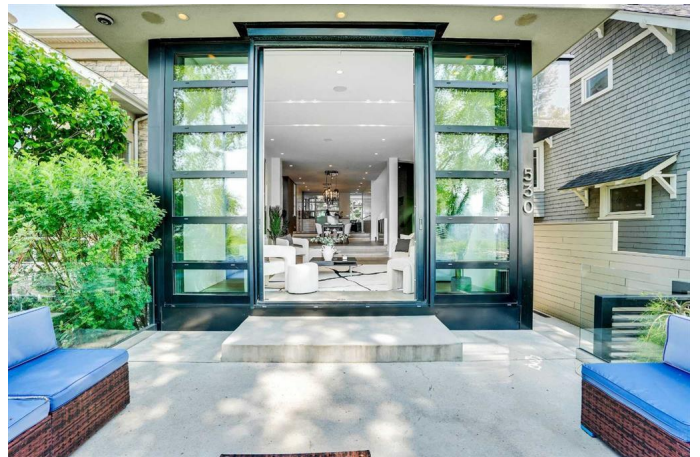
**\$3,795,000**

3 Bedroom, 5.00 Bathroom, 3,108 sqft

Residential on 0.08 Acres

Rosedale, Calgary, Alberta

Open house Sun.. July 27th. 2:00 TO 4:00, 530 Crescent Road N.W. World-class contemporary home on prestigious Crescent Road. Panoramic city-skyline and mountain views from what is arguably the best block in Rosedale. Brilliantly conceived and executed by the dream team of architect Sean McCormick, designer Paul Lavoie and Riverview Custom Homes. Over 3800 square feet of ultra-luxury living, ideal for couples, empty-nesters or singles. Remarkable bespoke design details and millwork throughout. 10' ceilings in the living room with full-height Reynaers sliding doors out to a beautiful terrace with fireplace. The floor level rises slightly as you move back so the views remain great from the spacious dining room and the sleek and stylish kitchen with quartz waterfall island, excellent storage and Miele appliance package. A discreet powder room and an elevator connecting all 4 levels are integrated into a paneled wall. A double office and a "3 season" room with power-screen complete the main level. Striking sculptural staircase leads up to the gorgeous primary suite with floor-to-ceiling windows, large dressing room and a dazzling ensuite with dual vanity, large shower, free-standing tub and private water closet. Generous laundry room and a second bedroom with ensuite and walk-in closet complete the second level. The top level holds a sprawling media-lounge with home theatre system, wet bar (2 Subzero fridges) and a private terrace with flame table,



south exposure and mountain views. Also a third bedroom and full bath on this level. The lower level is currently utilized as a gym with adjacent steam shower bath. Huge mudroom connects to the immaculate double garage. Infrastructure includes in-floor heat on the main and lower levels; snowmelt for the driveway, sidewalk and front terrace; and central air conditioning. Extensive home automation system that controls many aspects of the home. Secured gates front and back for perimeter control plus full alarm system with cameras. An exceptionally fine property that cannot be duplicated! Check out the video reel icon.

Built in 2015

### **Essential Information**

MLS® #	A2228986
Price	\$3,795,000
Bedrooms	3
Bathrooms	5.00
Full Baths	4
Half Baths	1
Square Footage	3,108
Acres	0.08
Year Built	2015
Type	Residential
Sub-Type	Detached
Style	3 Storey
Status	Active

### **Community Information**

Address	530 Crescent Road Nw
Subdivision	Rosedale
City	Calgary
County	Calgary
Province	Alberta
Postal Code	T2M4A5

## Amenities

Parking Spaces	4
Parking	Concrete Driveway, Double Garage Attached, Driveway, Heated Garage, Electric Gate, Heated Driveway
# of Garages	2

## Interior

Interior Features	No Animal Home, No Smoking Home, Open Floorplan, Skylight(s), Wired for Sound, Bar, Elevator
Appliances	Dishwasher, Washer, Bar Fridge, Built-In Refrigerator, Built-In Freezer, Built-In Oven, Induction Cooktop, Warming Drawer, Water Purifier, Wine Refrigerator
Heating	Forced Air, Natural Gas, In Floor
Cooling	Central Air
Fireplace	Yes
# of Fireplaces	3
Fireplaces	Gas
Has Basement	Yes
Basement	Finished, Full

## Exterior

Exterior Features	Fire Pit, Private Entrance
Lot Description	Back Lane, Back Yard, Views
Roof	Flat, Flat Torch Membrane, Membrane
Construction	Stucco
Foundation	Poured Concrete

## Additional Information

Date Listed	June 9th, 2025
Days on Market	54
Zoning	R-CG

## Listing Details

Listing Office	RE/MAX House of Real Estate
----------------	-----------------------------

Data is supplied by Pillar 9â„¢ MLS® System. Pillar 9â„¢ is the owner of the copyright in its MLS® System. Data is deemed reliable but is not guaranteed accurate by Pillar 9â„¢. The trademarks MLS®, Multiple Listing Service® and the associated logos are owned by The Canadian Real Estate Association (CREA) and identify the quality of services provided by real estate professionals who are members of CREA. Used under license.