

\$450,000 - 241079 Highway 842, Rural Wheatland County

MLS® #A2232751

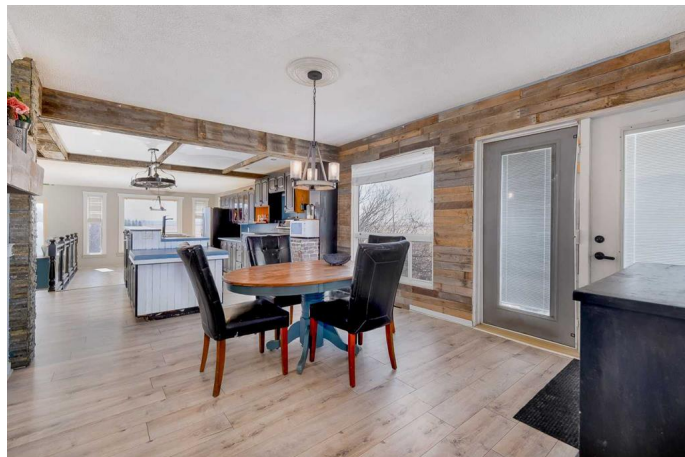
\$450,000

3 Bedroom, 1.00 Bathroom, 1,633 sqft
Residential on 2.32 Acres

NONE, Rural Wheatland County, Alberta

JUST 20 MINUTES FROM STRATHMORE.

Welcome to this 1633 sqft bungalow on 2.32 acres, with an additional 1062 sqft below grade. As you walk in, you will notice an abundance of natural light throughout the main floor and an open floor plan that spans end to end. There are two dining areas, separated by an expansive kitchen that provides two sinks, plenty of cupboard and counter space, and a huge walk-in pantry. This kitchen is a true delight for cooking and entertaining guests! The living room is warm and inviting, with plenty of natural light coming from the west. The large rear entryway has the coveted main floor laundry and leads down to the partially finished basement. The full bathroom has been recently renovated, just off to the huge primary bedroom. A second bedroom completes this bright, spacious main floor. Newer metal roof, soffits, eaves, and siding. Recent upgrades also include laminate flooring and remodeled bathroom. New 100A electrical panel, good septic system and excellent water well. This spacious bungalow, on concrete foundation, has paved road access with breathtaking prairie views from inside the home. Outside is a fenced dog run, a treed area in front that would be perfect for a garden, and a private backyard that would be great for summer night fires. Only 7 minutes away is the K-12 Wheatland Crossing School with bus route available, 8 minutes from



Hussar, and about 13 minutes from Standard.
It is not often an acreage at this price becomes
available this close to Strathmore and Calgary.

Built in 1974

Essential Information

MLS® #	A2232751
Price	\$450,000
Bedrooms	3
Bathrooms	1.00
Full Baths	1
Square Footage	1,633
Acres	2.32
Year Built	1974
Type	Residential
Sub-Type	Detached
Style	Acreage with Residence, Bungalow
Status	Active

Community Information

Address	241079 Highway 842
Subdivision	NONE
City	Rural Wheatland County
County	Wheatland County
Province	Alberta
Postal Code	t0j3g0

Amenities

Parking	Parking Pad, RV Access/Parking
---------	--------------------------------

Interior

Interior Features	Bookcases, Breakfast Bar, Central Vacuum, Kitchen Island, Open Floorplan, Pantry, Storage
Appliances	Dishwasher, Dryer, Electric Stove, Refrigerator, Washer, Window Coverings
Heating	Central, Natural Gas
Cooling	None
Has Basement	Yes

Basement	Full, Partially Finished
----------	--------------------------

Exterior

Exterior Features	Garden, Private Yard, Dog Run
-------------------	-------------------------------

Lot Description	Back Yard, Few Trees, Front Yard, Garden, Gazebo, Level, Private, Views, Dog Run Fenced In
-----------------	--

Roof	Metal
------	-------

Construction	Vinyl Siding, Wood Frame
--------------	--------------------------

Foundation	Poured Concrete
------------	-----------------

Additional Information

Date Listed	June 19th, 2025
-------------	-----------------

Days on Market	72
----------------	----

Zoning	CH
--------	----

Listing Details

Listing Office	eXp Realty
----------------	------------

Data is supplied by Pillar 9â„¢ MLSÂ® System. Pillar 9â„¢ is the owner of the copyright in its MLSÂ® System. Data is deemed reliable but is not guaranteed accurate by Pillar 9â„¢. The trademarks MLSÂ®, Multiple Listing ServiceÂ® and the associated logos are owned by The Canadian Real Estate Association (CREA) and identify the quality of services provided by real estate professionals who are members of CREA. Used under license.