

# \$575,000 - 156 Ranch Rise, Strathmore

MLS® #A2245061

**\$575,000**

4 Bedroom, 4.00 Bathroom, 1,693 sqft

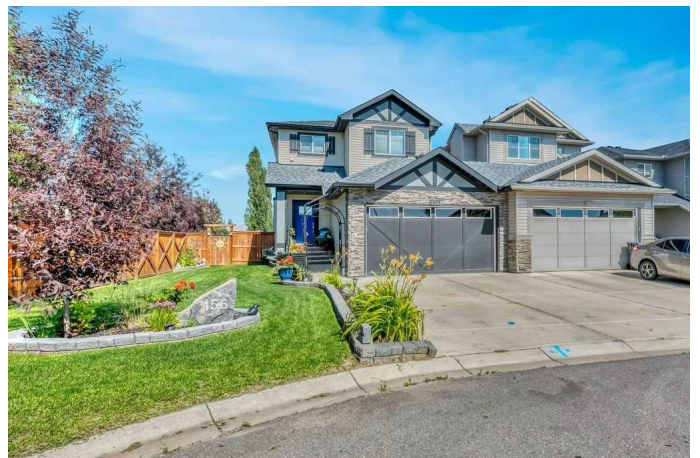
Residential on 0.12 Acres

The Ranch\_Strathmore, Strathmore, Alberta

Welcome to this beautifully appointed home in The Ranch, one of Strathmore's most sought-after communities. Built by Bespoke Custom Homes in 2017, this elegant & thoughtfully designed home offers over 2,300 sq ft of total living space and showcases exceptional craftsmanship throughout. The open-concept main floor features a modern kitchen complete with a large island & breakfast bar, stunning quartz countertops, & top-of-the-line stainless steel appliances, including a brand-new Bosch gas stove. Double French doors open into a spacious flex room, perfect for a home office, formal dining area, or children's playroom.

Upstairs, you'll find three generously sized bedrooms & a 4-piece main bathroom. The primary retreat offers a large walk-in closet & an amazing 5-piece ensuite with double vanities & a 2-person jet tub—ideal for relaxing after a long day. The second-floor laundry room adds convenience & style, boasting a wash sink & a full-length folding counter.

The fully finished basement is designed for both comfort & functionality with 9-foot ceilings, a large rec room perfect for movie nights or entertaining, a spacious fourth bedroom with a walk-in closet, & a full three-piece bathroom. Additional upgrades include central air conditioning, gemstone lighting, underground irrigation, and a storage shed. Let's not forget about the MAN CAVE of a garage - heated, drywalled & painted red,



black & white and loaded with shelving.  
Situating on a desirable corner lot, the  
beautifully landscaped backyard serves as a  
private oasis with plenty of space for outdoor  
enjoyment. The front of the home offers ample  
extra parking, including room for your RV. This  
move-in-ready home blends luxury, comfort, &  
practicalityâ€”an ideal place to call home in  
Strathmore located close to Shopping,  
Schools, Kinsmen Lake Park & walking paths.

Built in 2017

**Essential Information**

MLS® #	A2245061
Price	\$575,000
Bedrooms	4
Bathrooms	4.00
Full Baths	3
Half Baths	1
Square Footage	1,693
Acres	0.12
Year Built	2017
Type	Residential
Sub-Type	Detached
Style	2 Storey
Status	Active

**Community Information**

Address	156 Ranch Rise
Subdivision	The Ranch_Strathmore
City	Strathmore
County	Wheatland County
Province	Alberta
Postal Code	T1P 0G3

**Amenities**

Parking Spaces	6
Parking	Double Garage Attached, Heated Garage

# of Garages 2

## Interior

Interior Features	Built-in Features
Appliances	Central Air Conditioner, Dishwasher, Gas Stove, Microwave, Range Hood, Refrigerator, Washer/Dryer, Window Coverings
Heating	Forced Air, Natural Gas
Cooling	Central Air
Fireplace	Yes
# of Fireplaces	1
Fireplaces	Gas, Living Room
Has Basement	Yes
Basement	Finished, Full

## Exterior

Exterior Features	BBQ gas line, Private Yard
Lot Description	Back Yard, Landscaped
Roof	Asphalt Shingle
Construction	Vinyl Siding
Foundation	Poured Concrete

## Additional Information

Date Listed	August 2nd, 2025
Days on Market	1
Zoning	R2

## Listing Details

Listing Office	RE/MAX Key
----------------	------------

Data is supplied by Pillar 9â„¢ MLS® System. Pillar 9â„¢ is the owner of the copyright in its MLS® System. Data is deemed reliable but is not guaranteed accurate by Pillar 9â„¢. The trademarks MLS®, Multiple Listing Service® and the associated logos are owned by The Canadian Real Estate Association (CREA) and identify the quality of services provided by real estate professionals who are members of CREA. Used under license.