

# \$730,000 - 32142 Range Road 50, Rural Mountain View County

---

MLS® #A2252187

**\$730,000**

3 Bedroom, 4.00 Bathroom, 1,135 sqft  
Residential on 4.94 Acres

NONE, Rural Mountain View County, Alberta

This scenic 4.94 acre property in the heart of Bergen offers peaceful country living with incredible versatility and located just one hour from both Calgary and Red Deer.

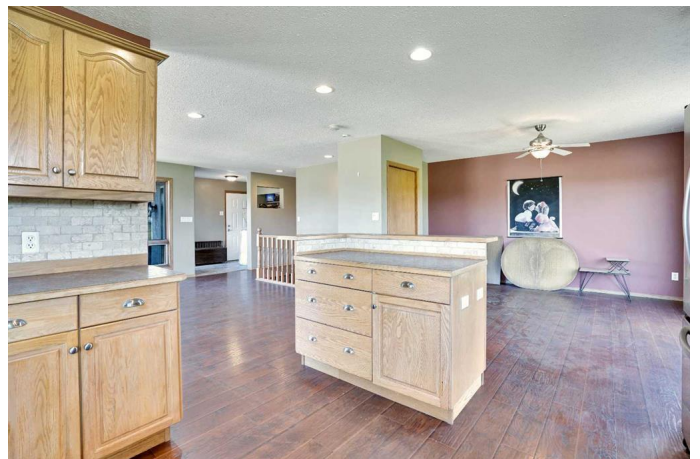
Settled on a quiet dead end road with only a few nearby neighbours, the setting is private and serene offering peaceful views in every direction.

This spacious walkout bungalow features three bedrooms and three and a half bathrooms, with two fully self-contained living spaces – one on the main floor and one in the basement – making it ideal for multi-generational living, guests, or rental income.

The home was originally built in 1995 and was moved onto a new foundation in 2013. At that time, it was extensively updated with a brand new septic system, roof, electrical, plumbing, along with in-floor heating throughout the entire basement.

The main level features a bright, open-concept kitchen and living area with stainless steel appliances and large windows that capture stunning views. Completing the main floor you™ll find a spacious dining room, a fully equipped bathroom, convenient main floor laundry, and a generous bedroom complete with a walk-in closet and private ensuite.

The walkout basement includes two additional



bedrooms, each with their own private ensuite. Along with a second full kitchen, laundry, and separate entrance, allowing for complete independence between the two living areas.

The oversized double attached garage is fully equipped with in-floor heat, a floor drain, and a welder plug-in â€” perfect for hobby mechanics or workshop use.

?Step outside and youâ€™ll find the property is fenced and cross-fenced for livestock, with approximately four acres of pasture and one acre of lawn that could be converted to pasture - producing around 10 hay bales per year. There is plenty of space for RV parking, along with a large concrete patio, and the beginnings of a dog run with posts already in place.

With strong infrastructure, great water, and flexible living arrangements, this Bergen acreage is a rare opportunity for those seeking space, privacy, and the freedom of rural life with income potential.

Built in 1990

## Essential Information

MLS® #	A2252187
Price	\$730,000
Bedrooms	3
Bathrooms	4.00
Full Baths	3
Half Baths	1
Square Footage	1,135
Acres	4.94
Year Built	1990
Type	Residential
Sub-Type	Detached
Style	Acreage with Residence, Bungalow
Status	Active

## Community Information

Address	32142 Range Road 50
Subdivision	NONE
City	Rural Mountain View County
County	Mountain View County
Province	Alberta
Postal Code	T0M 1X0

## Amenities

Parking Spaces	6
Parking	Double Garage Attached, RV Access/Parking
# of Garages	2

## Interior

Interior Features	Ceiling Fan(s), Kitchen Island, No Smoking Home, Open Floorplan, Pantry, Walk-In Closet(s)
Appliances	Dishwasher, Dryer, Electric Oven, Microwave, Refrigerator, Washer, Window Coverings
Heating	In Floor, Forced Air, Natural Gas
Cooling	None
Has Basement	Yes
Basement	Exterior Entry, Finished, Full, Suite, Walk-Out

## Exterior

Exterior Features	Dog Run, Garden
Lot Description	Few Trees, Garden, Pasture
Roof	Asphalt Shingle
Construction	Concrete, Stucco
Foundation	Poured Concrete

## Additional Information

Date Listed	August 29th, 2025
Days on Market	1
Zoning	CR

## Listing Details

Listing Office	CIR Realty
----------------	------------

Data is supplied by Pillar 9â„¢ MLSÂ® System. Pillar 9â„¢ is the owner of the copyright in its MLSÂ® System. Data is deemed reliable but is not guaranteed accurate by Pillar 9â„¢. The trademarks MLSÂ®, Multiple Listing ServiceÂ® and the associated logos are owned by The Canadian Real Estate Association (CREA) and identify the quality of services

provided by real estate professionals who are members of CREA. Used under license.