

\$2,600,000 - 210028 Spruce Ridge Lane W, Rural Foothills County

MLS® #A2262930

\$2,600,000

4 Bedroom, 5.00 Bathroom, 3,021 sqft
Residential on 2.40 Acres

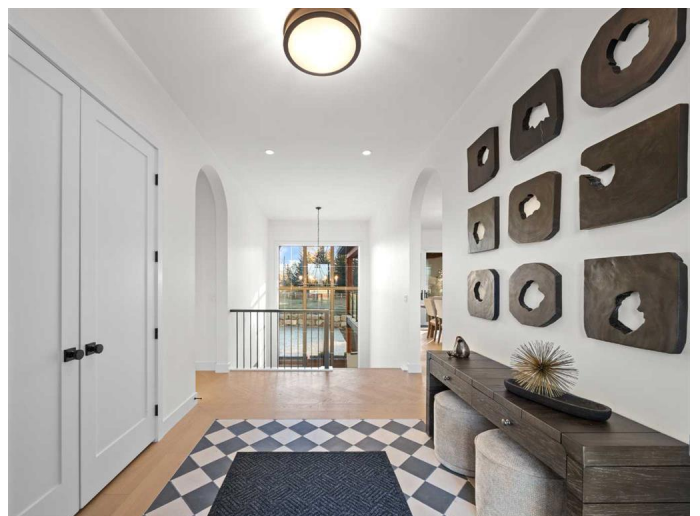
NONE, Rural Foothills County, Alberta

Nestled in the rolling landscapes just outside Southwest Calgary, this stunning custom-built luxury estate offers the perfect balance between serene country living and urban convenience. Located on a 2.4-acre private lot in a quiet cul-de-sac surrounded by other executive homes, this brand-new residence combines timeless craftsmanship, elegant design, and modern functionality, just 3 minutes from Spruce Meadows and 30 minutes from downtown Calgary.

With over 5,300 sq. ft. of finished living space, this home was built with meticulous attention to detail. Step inside to discover a bright, open layout filled with natural light, soaring ceilings, and elegant arched doorways that bring classic charm into the modern design. The main living area features large picture windows with mountain views, a beautiful fireplace centrepiece, and seamless flow into the dining area and spacious terrace, perfect for entertaining or relaxing while enjoying the peaceful scenery.

The chef-inspired kitchen is a true showpiece, boasting an oversized island, Brazilian porcelain countertops, custom cabinetry, and Italian Fulgor Milano appliances. A fully equipped butler's pantry adds functionality and extra storage, while the adjoining mudroom connects to a triple attached garage designed for convenience and versatility.

The main-floor primary suite feels like a private



retreat with vaulted ceilings, a fireplace, and a private covered deck for morning coffee or evening wine. The spa-like ensuite features a freestanding tub with mountain views, a glass-enclosed steam shower, and a massive walk-in closet with custom built-ins.

Upstairs, a spectacular bonus room above the garage includes vaulted ceilings, a full bathroom, and a private west-facing balcony, ideal as a media room, guest suite, or entertainment area.

The walkout basement offers incredible natural light and a flexible open layout, complete with a wet bar, a large family area, three spacious bedrooms (each with walk-in closets), and two full bathrooms. Step directly outside to a covered patio and your blank canvas backyard, ready for your dream landscape, pool, or outdoor kitchen.

Every inch of this property reflects quality, craftsmanship, and thoughtful design—from heated tile floors and custom millwork to the seamless blend of comfort and sophistication throughout.

If you've been searching for a home that offers privacy, space, and elegance without sacrificing proximity to the city, this one-of-a-kind estate is it.

Built in 2024

Essential Information

MLS® #	A2262930
Price	\$2,600,000
Bedrooms	4
Bathrooms	5.00
Full Baths	4
Half Baths	1
Square Footage	3,021
Acres	2.40
Year Built	2024

Type	Residential
Sub-Type	Detached
Style	Acreage with Residence, 1 and Half Storey
Status	Active

Community Information

Address	210028 Spruce Ridge Lane W
Subdivision	NONE
City	Rural Foothills County
County	Foothills County
Province	Alberta
Postal Code	T1S 3K1

Amenities

Parking	Triple Garage Attached
# of Garages	3

Interior

Interior Features	Bar, Built-in Features, Central Vacuum, Double Vanity, Kitchen Island, Open Floorplan, Pantry, Soaking Tub, Stone Counters, Vaulted Ceiling(s), Walk-In Closet(s)
Appliances	Bar Fridge, Built-In Refrigerator, Dishwasher, Dryer, Range Hood, Refrigerator, Stove(s), Washer, Built-In Gas Range, Double Oven
Heating	In Floor, Forced Air
Cooling	Central Air
Fireplace	Yes
# of Fireplaces	2
Fireplaces	Gas, Living Room, Master Bedroom
Has Basement	Yes
Basement	Finished, Full, Walk-Out

Exterior

Exterior Features	Other
Lot Description	Lawn, Paved
Roof	Asphalt Shingle
Construction	Composite Siding, Stucco
Foundation	Poured Concrete

Additional Information

Date Listed	October 17th, 2025
-------------	--------------------

Days on Market 1
Zoning CR

Listing Details

Listing Office CIR Realty

Data is supplied by Pillar 9â,,ç MLSÂ® System. Pillar 9â,,ç is the owner of the copyright in its MLSÂ® System. Data is deemed reliable but is not guaranteed accurate by Pillar 9â,,ç. The trademarks MLSÂ®, Multiple Listing ServiceÂ® and the associated logos are owned by The Canadian Real Estate Association (CREA) and identify the quality of services provided by real estate professionals who are members of CREA. Used under license.